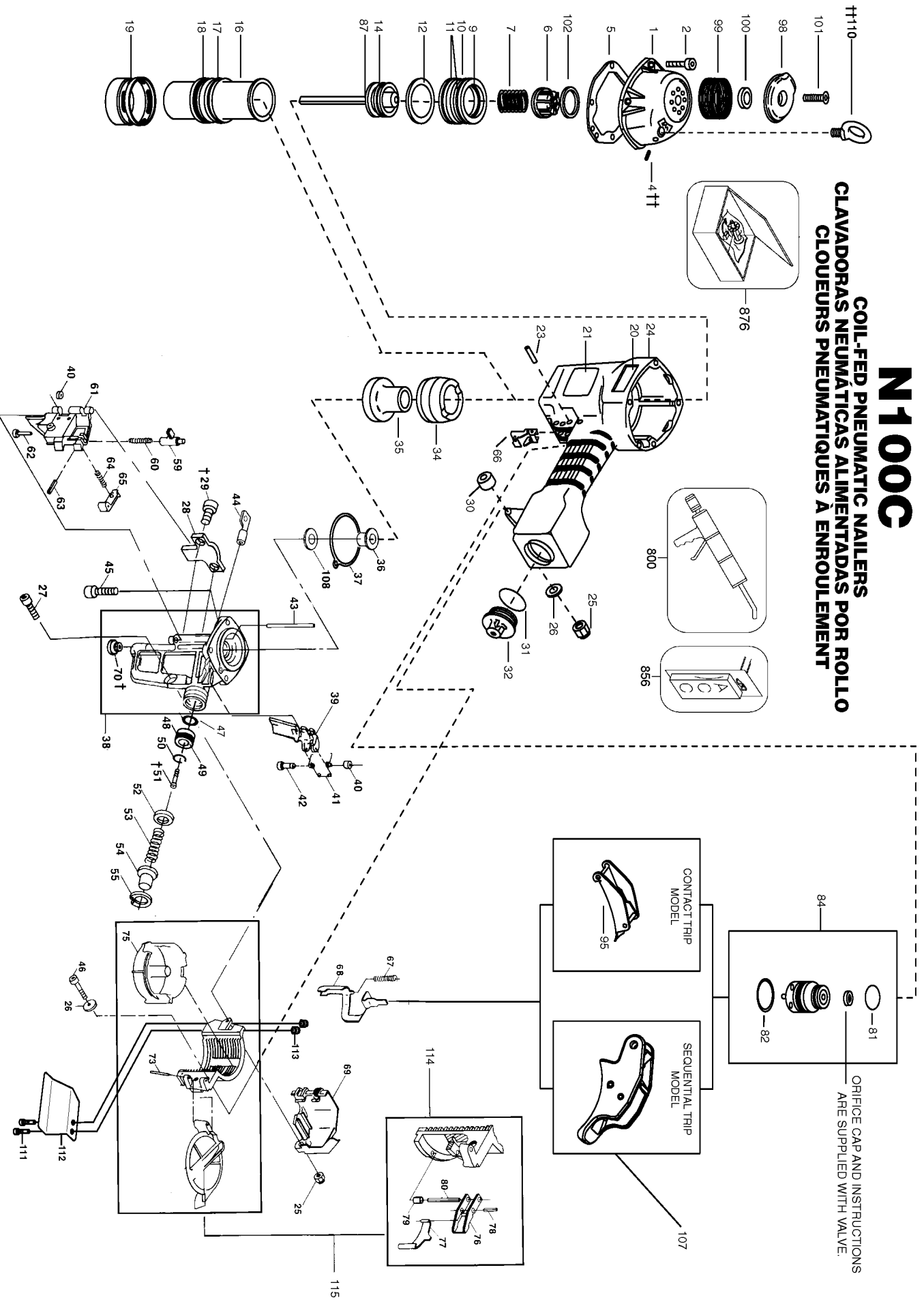


N100C

**COIL-FED PNEUMATIC NAILERS
CLAVADORAS NEUMÁTICAS ALIMENTADAS POR ROLLO
CLOUEURS PNEUMATIQUES À ENROULEMENT**



IP1067-1REVK 05/07
TO BE USED WITH PARTS LIST IP1067-2 AND OPERATION AND MAINTENANCE MANUAL 102777

† Screw to feed piston rod with Loctite #271, available as part 851325. Loctite 271 Packet.
†† Assemble these threaded components with Loctite #242, available as part 851385.

Parts List for N100C-1 Type 0

Item Number	Part Number	Description	Qty Required
1	N100140A	CYLINDER CAP	1
2	MSC6100-25	SCREW-SHCS-M6X1.00X2	4
4	MSS6100-6P	SCREW-CUPSSS-M6X1.00	1
5	N100131	SEAL- CYLINDER CAP	1
6	N86132	PISTON STOP	1
7	854017-S	SPRING-COMPRESSION	1
9	MRG051531	O-RING-2.028X.122	1
10	105578	HEAD VALVE (SERVICE	1
11	851538	O-RING-2.675X.116	1
12	N86125	HEAD VALVE SEAL	1
13	N100116	MAIN PISTON	1
14	851539	O-RING-2.039X.253	1
16	N90111	CYLINDER SLEEVE	1
17	RG273710	O-RING-2.737X.103	1
18	N100128	SEAL- CHECK	1
19	N100317	LOWER SLEEVE	1
20	113220	LABEL-BOSTITCH	1
21	159912	LABEL-WARNING-COIL N	1
23	102549	PIN-SPECIAL SPIROL M	1
24	N90110	FRAME	1
25	MHE6100-100	NUT-ESN M6X1	2
26	MPW6.3	WASHER-PWN M6	2
27	MSC6100-35	SCREW-SHCS-M6X1.00X3	1
28	N100113	CONTACT ARM RETAINER	1
29	MSC6100-12	SCREW-SHCS-M6X1.00X1	2
30	N70143	BUSHING-RUBBER	1
31	850235	O-RING-1.487X.103	1

COPYRIGHT© 2005. All Rights Reserved.

Parts list, pricing, and availability subject to change. Please visit www.dewaltservicenet.com for current parts information.

Parts List for N100C-1 Type 0

Item Number	Part Number	Description	Qty Required
32	103651	CAP-END	1
34	N100129	BUMPER- OUTER	1
35	N100130	BUMPER- INNER	1
36	N100103	DRIVER-GUIDE	1
37	106294	SEAL-NOSE	1
38	105836	ASSEMBLY-NOSE & WEAR	1
39	N100112	FEED PAWL	1
40	854004	WASHER-RUBBER-7	2
41	N80120	SPRING-TORSION	1
42	N50087	PIN-SPECIAL(STEP)	1
43	N90106	PIN-DOOR HINGE	1
44	N80121	ROD-FEED PISTON	1
45	MSC8125-30	SCREW-SHCS M8X30	1
46	MSC6100-40	SCREW-SOC. HD. CAP M	1
47	MRG009824	O-RING-.386X.094	1
48	851384	O-RING-.987X.103	1
49	N80128	PISTON-FEED	1
50	LW14.2	WASHER-1/4 HI COL LO	1
51	MSC6100-16	SCREW-SHCS-M6X1.00X1	1
52	N80123	BUMPER-FEED PISTON	1
53	N80122	SPRING-COMPRESSION	1
54	N80124	COVER-FEED PISTON	1
55	851383	RING-RETAINING METRI	1
56	MRG004216	O-RING-.165X.063	1
59	N70150	LATCH DOOR	1
60	854013	SPRING,CMPRSN.	1
61	N100101	DOOR	1

COPYRIGHT© 2005. All Rights Reserved.

Parts list, pricing, and availability subject to change. Please visit www.dewaltservicenet.com for current parts information.

Parts List for N100C-1 Type 0

Item Number	Part Number	Description	Qty Required
62	N90107	CHECK PAWL STUD	1
63	MPP030012	PIN-SPIROL	1
64	854011	COMPRESSION SPRING	1
65	N70149	PAWL CHECK	1
66	N70145	GUIDE-ARM	1
67	N90103	SPRING-COMPRESSION	1
68	N100106	CONTACT ARM	1
69	N100114	CONTACT ARM GUARD	1
70	N100120	BUSHING-WEAR	1
73	UB5130	PIN-SPIROL 1/4 X 1 7	1
75	N80103	BOTTOM-CANISTER	1
76	107455	LATCH-CANISTER	1
77	N80108	SPRING-FLAT	1
78	UB2110.4	PIN-ROLL 1/8 X 5/8	1
79	N80106	SPACER-LATCH	1
80	UB2126	PIN-ROLL 1/8 X 1 5/8	1
81	86459	O-RING	1
82	MRG019824	O-RING-.780X.094	1
84	TVA6	KIT-TRIGGER VALVE	1
87	N100117A	ASSEMBLY-DRIVER/PIST	1
95	CNTK2	KIT-CONTACT TRIP CON	1
98	N100134A	COVER-EXHAUST	1
99	N100136	MUFFLER- EXHAUST	1
100	N100138	SPACER- MUFFLER	1
101	MSC8125-28	SCREW-SHCS M8X28	1
102	N100137	RING- BUMPER	1
107	SEQ6	KIT-SEQUENTIAL	1

COPYRIGHT© 2005. All Rights Reserved.

Parts list, pricing, and availability subject to change. Please visit www.dewaltservicenet.com for current parts information.

Parts List for N100C-1 Type 0

Item Number	Part Number	Description	Qty Required
108	N100126	URETHANE WASHER	1
110	851756	HANGER	1
111	MSC5080-16	SCREW-SHCS-M5X0.80X1	2
112	103031	GUARD-NAIL	1
113	MHE5080-100	NUT-NYLON M5X.80	2
114	121632	ASSEMBLY-BRACKET	1
115	121635	ASSEMBLY-CANISTER	1
800	100679	LUBE (1LB.CAN)	1
800	100653	LUBE (2CC)	1
876	9R195579	DEBRIS SHEILD KIT	1

COPYRIGHT© 2005. All Rights Reserved.

Parts list, pricing, and availability subject to change. Please visit www.dewaltservicenet.com for current parts information.